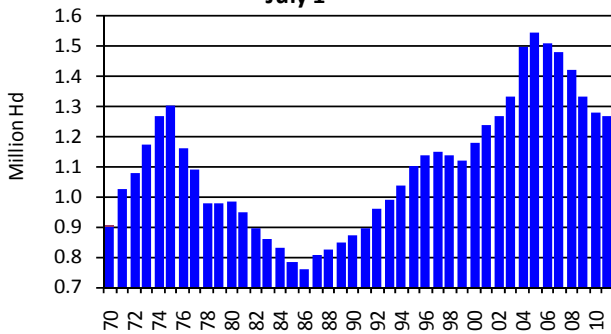


# Beef Industry Facts

October 2011

## PRODUCTION

**Saskatchewan Beef Cow Inventory**  
July 1



Source: Statistics Canada

**3.06 million**

Total Cattle and Calves  
Up 0.2% from 2010  
(includes 44,000 dairy cattle)  
*Statistics Canada July 2011*

**1.27 million**

Beef Cows  
Down 0.8% versus year ago  
*Statistics Canada July 2011*

**18,620**

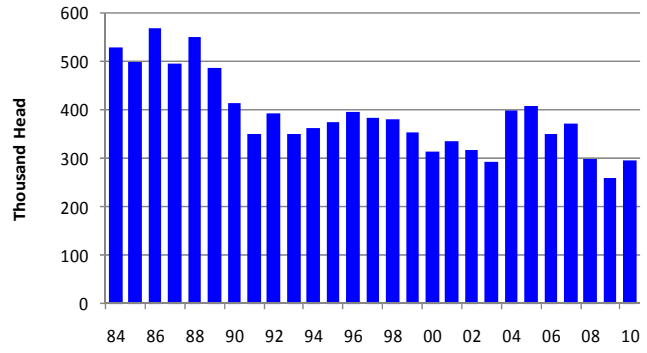
Farms and Ranches with Beef Cattle

**16,910**

Farms and Ranches with Beef Cows

*2006 Agriculture Census*

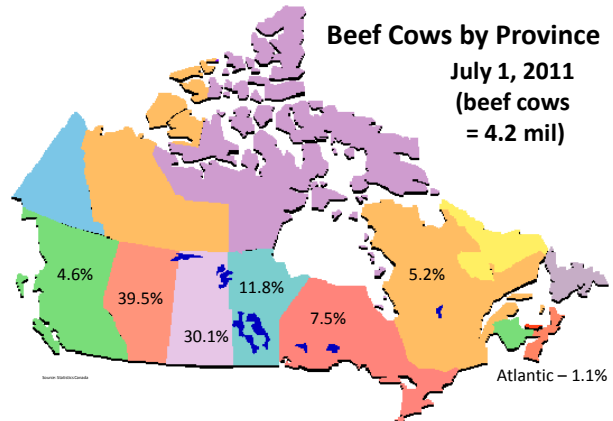
**SK/BC/MB Fed Cattle Production**



Source: Canfax

**Beef Cows by Province**

July 1, 2011  
(beef cows = 4.2 mil)



All Inventories in 1,000 head

### Did you know...

✓ The average beef cow herd size in Saskatchewan is 73. *-2006 Agriculture Census*

✓ There are 9,936 farms with >47 head of cattle *-2006 Agriculture Census*

✓ Saskatchewan cattle ...

- 78.9% are on cow/calf operations
- 14.3% are on feeder & Stocker operations
- 4.9% are on feeding operations
- 1.9% are on dairy operations

*-2011 Statistics Canada*

✓ Saskatchewan Cattle and calf cash receipts in 2010 totaled \$1.02 billion, up 1.02% from 2009. *-Statistics Canada*

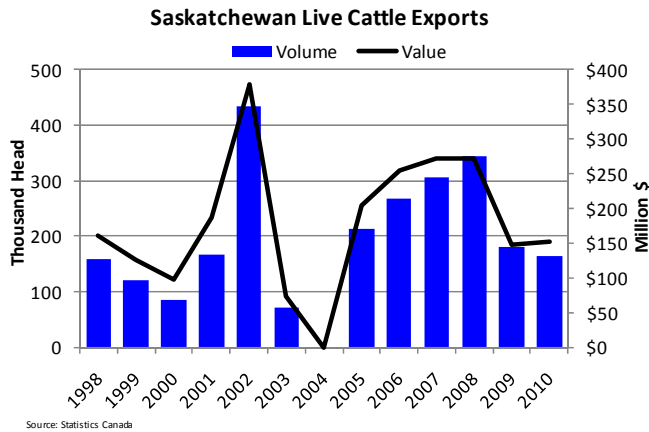
✓ Beef production contributed \$4.07 million to Saskatchewan's economy in 2010 *-Canfax, Statistics Canada 2010*

✓ Saskatchewan, Manitoba and British Columbia fed around 300,000 cattle to market weight in 2010 up 14% from 2009. *-Canfax, Statistics Canada, AAFC*



# SASKATCHEWAN TRADE

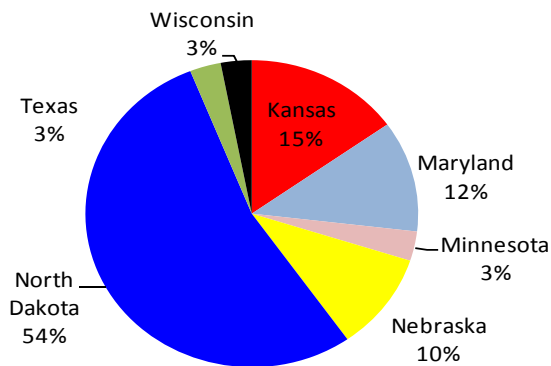
## Volume & Value of Live Cattle Exports



### Beef Imports in 2010 =

704 head of cattle from the US & 601 tonnes of beef

### Saskatchewan Beef Imports - 2010



✓ In 2010, Canada exported 50% of total beef and cattle produced in Canada.

-Statistics Canada, Confax, AAFC 2010

✓ Canadian beef exports were valued at \$1.42 billion in 2010 –this compares to \$1.26 billion in 2009.

-Statistics Canada 2010

### Canadian Beef Consumption

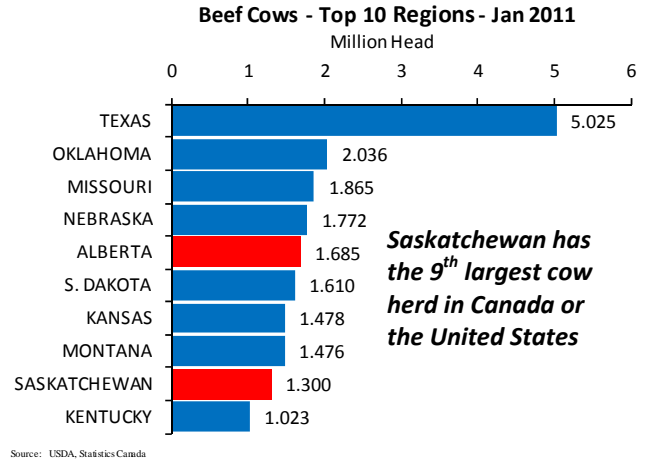
What are we really eating?

44.5 lbs. (20.2 kg) per person yearly  
Down 3.3% versus last year

Statistics Canada 2010, Livestock stats, retail wt.

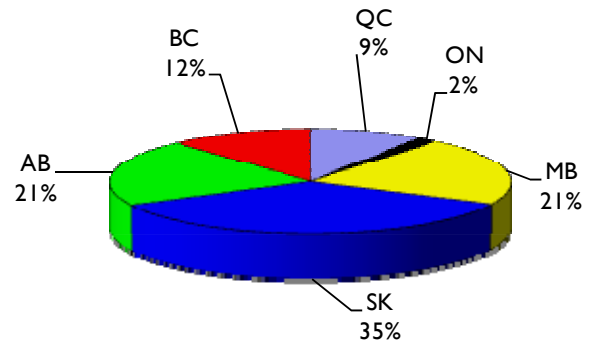
1 metric tonne = 2,204.6 lbs.

# WHERE SASKATCHEWAN FITS



**Saskatchewan has the 9<sup>th</sup> largest cow herd in Canada or the United States**

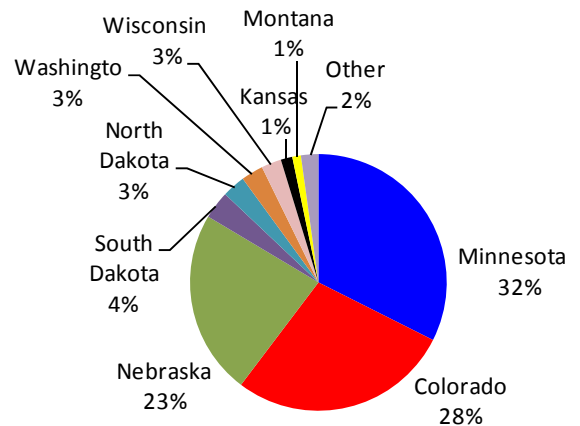
### Exports of Feeder Cattle by Province 2010



Source: Statistics Canada

**Saskatchewan represents 16% of all Canadian live cattle exports; 35% of feeder exports and 10% of fed exports**

### Live Cattle Exports by Destination



**Major destinations for live exports include Minnesota, Colorado and Nebraska**